

Tour Length

3 Days / 2 Nights

Start Tour

-

End Tour

-

Travelers

2 Adults

3 Days Gorilla Trekking Bwindi Uganda Safari

Dear ,

We are happy to send you this custom-made quote for our 3 Days Gorilla Trekking Bwindi Uganda Safari.

We have taken great care in creating this tour that runs over 3 days and 2 nights.

The tour starts on (to be confirmed) in Entebbe.

Feel free to reach out if you have any questions. We will gladly answer them to make sure that you have the safari of a lifetime with us!

Best regards,



Sharif Zikusoka
Ameera Africa Safaris

Phone +256-393-194074
Email info@ugandasafaritour.com

Summary



3 Days Gorilla Trekking Bwindi Uganda Safari

Day by Day

 **Start Destination:** Entebbe

See your full itinerary on **Page 5–8**

Days	Main Destination	Accommodation	Meal Plan
 Day 1	Bwindi Impenetrable National Park	Buhoma Lodge Lodge	Lunch & Dinner
 Day 2	Bwindi Impenetrable National Park	Buhoma Lodge Lodge	Breakfast, Lunch & Dinner
 Day 3	Entebbe	No accommodation	Breakfast & Lunch

 **End Destination:** Entebbe

Highlights

 **Mountain Gorilla Trekking**  **Bwindi Impenetrable National Park**

3 Days Gorilla Trekking Bwindi Uganda Safari

Tour Length

3 Days / 2 Nights

Travelers

2 Adults**⊕ Included**

Park fees, All accommodations, All activities, unless indicated as optional, Meals (As specified in the day-by-day section), Professional guide, All transportation (Unless labeled as optional), One Gorilla tracking permit per person, 4

⊖ Excluded

Additional accommodation before and at the end of the tour, Personal items (Souvenirs, travel insurance, visa fees, etc.), Tips (Tipping guideline US\$10.00 pp per day), International flights

Payment Terms

Booking is done by deposit of at least 50% of total cost of the tour, once the tour is confirmed in more than a month's time and 100% of total cost for the tour if the safari is in less than a month's time. However, installment payments can be agreed upon in some specific cases.

Refund and cancellation policy

Confirmed bookings prior to 60 days of arrival date for the tour will forfeit the 30% deposit.

> 59-30 days to client arrival date- 50% of total booking will be charged.

> 29-0 days to client arrival date -100% of total booking will be charged and there will be no refund.

All cancellations or amendments are only accepted when received in writing. However, a reschedule is advised within the same financial year to avoid losses.

Accepted mode of payment

We accept :

- Electronic Fund Transfer (EFT)
- Direct bank transfer
- Visa and master card

Your journey overview



Start Point	Entebbe
Day	Destination & Accommodation
Day 1-2	Bwindi NP Buhoma Lodge
Day 3	Entebbe (no accommodation)
End Point	Entebbe



Mountain Gorillas

Bwindi Impenetrable National Park

Your Ugandan safari starts here and now. With all of the incredible wildlife that this country has to offer, we know that you're keen to get started. And as soon as we introduce you to your guide and answer your questions, we'll get you out there exploring.

Bwindi Impenetrable National Park protects one of Africa's most ancient highland forests. It has been inscribed as a UNESCO World Heritage Site on account of its rich biodiversity, which includes a great many plants and animals whose range is restricted to the Albertine Rift Valley. The best known of these is of course the mountain gorilla, but other local specialties include the handsome L'Hoest's monkey, spectacular Rwenzori three-horned chameleon and eagerly sought African green broadbill.

Entebbe

Entebbe, the air gateway to Uganda, could hardly be more different in character to the nearby capital Kampala. Better suited to bird-watchers than to partygoers, it is an attractive small city set on jungle-lined Lake Victoria.

Activity Day 1

Early Morning

→ Transfer by Road, **Entebbe** to **Bwindi Impenetrable National Park**

Meal Plan – Day 1

→ Lunch & Dinner



Accommodation | Day 1

Buhoma Lodge

Inside Bwindi Impenetrable National Park

One of the best and most popular bases for exploring Bwindi Impenetrable National Park, Buhoma Lodge has a forested setting 100m inside the Buhoma gate, directly opposite the main gorilla tracking trailhead. Enjoy uninterrupted views of lush green slopes from the characterful 1st-floor restaurant, and exceptional in-house birding and monkey viewing from the terrace of your spacious and stylish timber cottage.

Private verandah overlooking forest



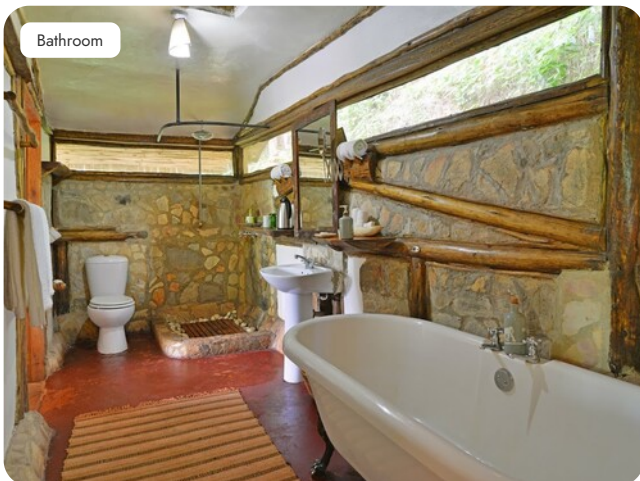
Buhoma Lodge



Chalet bedroom area



Bathroom



Lounge with cozy fireplace



Bwindi Impenetrable National Park

We return to the lushly forested landscapes of Bwindi Impenetrable National Park.

Mountain Gorilla Trekking, Bwindi Impenetrable National Park

There are few more iconic wildlife experiences than trekking in search of mountain gorillas. These soulful creatures and the remarkable landscape they inhabit are worth every second that you walk through the forest to find them.



Accommodation | Day 2

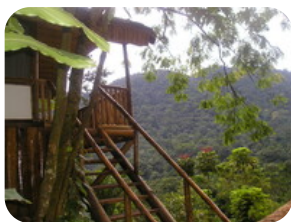
Buhoma Lodge

Inside Bwindi Impenetrable National Park

Stay for longer at Buhoma Lodge.



Buhoma Lodge



Activities Day 2

Morning

→ Mountain Gorilla Trekking, **Bwindi Impenetrable National Park**

Afternoon

→ Visit the Batwa Pygmies, **Bwindi Impenetrable National Park**



Meal Plan – Day 2

→ Breakfast, Lunch & Dinner



Bwindi Impenetrable National Park



Bwindi Impenetrable National Park

The last day with us

We have no doubt that you have enjoyed an incredible safari in Uganda, but sadly it now comes to an end. We wish you a safe onward journey and look forward to seeing you again next time you go on safari.



Activities Day 3

Early Morning

→ Transfer by Road, **Bwindi Impenetrable National Park** via **Equator point Uganda** to **Entebbe**

Afternoon

→ This afternoon we pass through **Equator point Uganda**, which is well known locally as an equator-crossing point.

Evening

→ This evening is when your tour finishes in **Entebbe**.

🍴 Meal Plan – Day 3

→ Breakfast & Lunch